



ESTORIL 4.182 m.

SS300

ESBK CIRCUITO DO ESTORIL II 30 AGOSTO Y 1 SEP. ENTRENAMIENTOS LIBRE 2

Clasificación

Nº	Piloto	Nac	Equipo	Moto	Neum Cl.	Tiempo	Vlt.	Total	Dif.	Km/h
1	79 TOMAS ALONSO	POR	PONS MOTOSPORT ITALIKA RACING	KAWASAKI	Pirelli K	1:51.969	5	13	-	134.5
2	61 URIEL HIDALGO	ESP	DEZA-BOX77 RACING TEAM	KAWASAKI	Pirelli K	1:52.262	10	12	+0.293	134.1
3	1 GONZALO SANCHEZ	ESP	ARCO SASH MOTOR UNIVERSITY TEAM	YAMAHA	Pirelli Y	1:52.676	4	13	+0.707	133.6
4	24 MICHEL AGAZZI	ITA	YAMAHA MS RACING	YAMAHA	Pirelli Y	1:52.930	11	14	+0.961	133.3
5	26 DANIEL OCETE	ESP	I+ DENT JUNIOR RACING TEAM	YAMAHA	Pirelli Y	1:52.978	10	10	+1.009	133.3
6	5 ADRIAN COVARRUBIAS	ESP	PS RACINGTEAM	KAWASAKI	Pirelli K	1:53.087	9	11	+1.118	133.1
7	88 TOMAS MARIN	COL	DEZA-BOX77 RACING TEAM	KAWASAKI	Pirelli K	1:53.420	6	10	+1.451	132.7
8	91 VASCO ANTONIO GONÇALVES	POR		KAWASAKI	Pirelli K	1:53.696	9	12	+1.727	132.4
9	16 DINIS BORGES	POR	SPEED MASTER RACING TEAM	KAWASAKI	Pirelli K	1:53.795	8	13	+1.826	132.3
10	7 GUERAU SIMO	ESP	I+DENT JUNIOR RACING TEAM	YAMAHA	Pirelli Y	1:53.855	12	12	+1.886	132.2
11	64 SARA SANCHEZ	ESP	ILUSION RACING	KAWASAKI	Pirelli K	1:54.138	12	12	+2.169	131.9
12	18 IVAN MUÑOZ	ESP	TCM TEAM	KAWASAKI	Pirelli K	1:54.147	5	12	+2.178	131.9
13	48 JESUS MARTIM	POR	TEAM MOTO CLUBE DE LOULE	KAWASAKI	Pirelli K	1:54.310	4	13	+2.341	131.7
14	35 JOSE EMILIANO ZAMUDIO	MEX	PONS MOTOSPORT ITALIKA RACING	KAWASAKI	Pirelli K	1:54.404	4	14	+2.435	131.6
15	28 PIETRO ANASTASI	SUI	ARCO SASH MOTOR UNIVERSITY TEAM	YAMAHA	Pirelli Y	1:54.623	3	14	+2.654	131.3
16	19 LORENZO MOHEDANO	ESP	TCM TEAM	KAWASAKI	Pirelli K	1:54.703	11	11	+2.734	131.3
17	95 RICARDO RODRÍGUEZ	MEX	PONS MOTOSPORT ITALIKA RACING	KAWASAKI	Pirelli K	1:55.046	14	14	+3.077	130.9
18	92 JOEL AZNAR	ESP	ILUSION TEAM	KAWASAKI	Pirelli K	1:55.055	12	12	+3.086	130.9
19	42 ROSA JIMENEZ	ESP	ADN VG RACING	KAWASAKI	Pirelli K	1:55.125	11	14	+3.156	130.8
20	17 CARLA MULOT	FRA		YAMAHA	Pirelli Y	1:55.578	12	12	+3.609	130.3
21	83 ASTRID HORTENCIA MADRIGAL	MEX	PONS MOTOSPORT ITALIKA RACING	KAWASAKI	Pirelli K	1:55.620	6	12	+3.651	130.2
22	78 MARTIM LIMA	POR	DEZA-BOX77 RACING TEAM	KAWASAKI	Pirelli K	1:55.845	11	12	+3.876	130.0
23	23 RUBEN MONTERO	ESP		YAMAHA	Pirelli Y	1:55.899	8	14	+3.930	129.9
24	20 LUCAS MOHEDANO	ESP	TCM TEAM	KAWASAKI	Pirelli K	1:56.667	7	9	+4.698	129.0
25	21 RAN YOCHAY	ISR	KAWASAKI PALMETO PL RACING	KAWASAKI	Pirelli K	1:58.527	12	14	+6.558	127.0
26	22 AROA FERNANDEZ	ESP	I+DENT JUNIOR RACING TEAM	YAMAHA	Pirelli Y	1:59.579	10	14	+7.610	125.9

Vuelta rápida: Vlt. 5 TOMAS ALONSO 1:51.969 134.5 Km/h

Hora de publicación:

Estado de pista: **SECO**

Diretor de Carrera:

João Pedro Lima



Timekeeper

Jorge Pinto





SS300

ESBK CIRCUITO DO ESTORIL II 30 AGOSTO Y 1 SEP. ENTRENAMIENTOS LIBRE 2

Clasificación por Clase

Nº Piloto	Nac	Equipo	Moto	Tiempo	Vlt. Total	Dif.	Km/h
K							
1	79	TOMAS ALONSO	POR PONS MOTOSPORT ITALIKA RACING	KAWASAKI	1:51.969	5 13	134.5
2	61	URIEL HIDALGO	ESP DEZA-BOX77 RACING TEAM	KAWASAKI	1:52.262	10 12	+0.293 +0.293 134.1
3	5	ADRIAN GOVARRUBIAS	ESP PS RACINGTEAM	KAWASAKI	1:53.087	9 11	+1.118 +0.825 133.1
4	88	TOMAS MARIN	COL DEZA-BOX77 RACING TEAM	KAWASAKI	1:53.420	6 10	+1.451 +0.333 132.7
5	91	VASCO ANTONIO GONÇALVES	POR	KAWASAKI	1:53.696	9 12	+1.727 +0.276 132.4
6	16	DINIS BORGES	POR SPEED MASTER RACING TEAM	KAWASAKI	1:53.795	8 13	+1.826 +0.099 132.3
7	18	IVAN MUÑOZ	ESP TCM TEAM	KAWASAKI	1:54.147	5 12	+2.178 +0.352 131.9
8	48	JESUS MARTIM	POR TEAM MOTO CLUBE DE LOULE	KAWASAKI	1:54.310	4 13	+2.341 +0.163 131.7
9	35	JOSE EMILIANO ZAMUDIO	MEX PONS MOTOSPORT ITALIKA RACING	KAWASAKI	1:54.404	4 14	+2.435 +0.094 131.6
10	19	LORENZO MOHEDANO	ESP TCM TEAM	KAWASAKI	1:54.703	11 11	+2.734 +0.299 131.3
11	95	RICARDO RODRÍGUEZ	MEX PONS MOTOSPORT ITALIKA RACING	KAWASAKI	1:55.046	14 14	+3.077 +0.343 130.9
12	92	JOEL AZNAR	ESP ILUSION TEAM	KAWASAKI	1:55.055	12 12	+3.086 +0.009 130.9
13	42	ROSA JIMENEZ	ESP ADN VG RACING	KAWASAKI	1:55.125	11 14	+3.156 +0.070 130.8
14	83	ASTRID HORTENCIA MADRIGAL	MEX PONS MOTOSPORT ITALIKA RACING	KAWASAKI	1:55.620	6 12	+3.651 +0.495 130.2
15	78	MARTIM LIMA	POR DEZA-BOX77 RACING TEAM	KAWASAKI	1:55.845	11 12	+3.876 +0.225 130.0
16	20	LUCAS MOHEDANO	ESP TCM TEAM	KAWASAKI	1:56.667	7 9	+4.698 +0.822 129.0
17	21	RAN YOCHAY	ISR KAWASAKI PALMETO PL RACING	KAWASAKI	1:58.527	12 14	+6.558 +1.860 127.0
Y							
1	1	GONZALO SANCHEZ	ESP ARCO SASH MOTOR UNIVERSITY TEAM	YAMAHA	1:52.676	4 13	133.6
2	24	MICHEL AGAZZI	ITA YAMAHA MS RACING	YAMAHA	1:52.930	11 14	+0.254 +0.254 133.3
3	26	DANIEL OCETE	ESP I+ DENT JUNIOR RACING TEAM	YAMAHA	1:52.978	10 10	+0.302 +0.048 133.3
4	7	GUERAU SIMO	ESP I+DENT JUNIOR RACING TEAM	YAMAHA	1:53.855	12 12	+1.179 +0.877 132.2
5	28	PIETRO ANASTASI	SUI ARCO SASH MOTOR UNIVERSITY TEAM	YAMAHA	1:54.623	3 14	+1.947 +0.768 131.3
6	17	CARLA MULOT	FRA	YAMAHA	1:55.578	12 12	+2.902 +0.955 130.3
7	23	RUBEN MONTERO	ESP	YAMAHA	1:55.899	8 14	+3.223 +0.321 129.9
8	22	AROA FERNANDEZ	ESP I+DENT JUNIOR RACING TEAM	YAMAHA	1:59.579	10 14	+6.903 +3.680 125.9

Hora de publicación:

Estado de pista: **SECO**

<p>Diretor de Carrera: João Pedro Lima</p> 	<p>Timekeeper Jorge Pinto</p> 
---	--



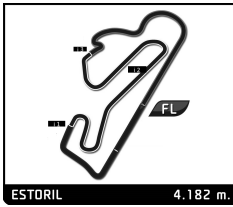
SS300

ESBK CIRCUITO DO ESTORIL II 30 AGOSTO Y 1 SEP. ENTRENAMIENTOS LIBRE 2

Vuelta a vuelta

— Vuelta invalidada ■ Mejor Personal ■ Mejor de la sesión B Cruzando por el pit lane

Vlt.	Tiempo	Sector 1	Sector 2	Sector 3	Sector 4	T. Sesión	Vlt.	Tiempo	Sector 1	Sector 2	Sector 3	Sector 4	T. Sesión	
1	GONZALO SANCHEZ ESP						10	1:59.820				29.845	35.097	23:21.244
	ARCO SASH MOTOR UNIVERSITY T YAMAHA						11	1:53.949	22.942	29.665	26.014	35.328	35.328	25:15.193
1	2:54.582	1:22.640	29.832	26.869	35.241	2:54.582	12	1:55.405	22.935	29.648	26.103	36.719	36.719	27:10.598
2	1:53.475	22.723	29.053	26.094	35.605	4:48.057	13	1:56.904	23.413	29.240	26.050	38.201	38.201	29:07.502
3	1:53.355	22.835	29.460	25.629	35.431	6:41.412								
4	1:52.676	22.855	29.238	25.483	35.100	8:34.088	17	CARLA MULOT FRA						
5	1:52.698	22.776	29.068	25.772	35.082	10:26.786		YAMAHA						
6	2:16.273 B	23.199	29.726	31.771	51.577	12:43.059	1	2:29.483	51.650	32.100	27.754	37.979	2:29.483	
7	4:49.644	3:18.478	29.407	25.899	35.860	17:32.703	2	2:06.026	24.428	30.769	33.257	37.572	4:35.509	
8	1:52.800	22.831	29.282	25.601	35.086	19:25.503	3	2:00.104	26.222	30.350	26.693	36.839	6:35.613	
9	1:53.340	23.393	29.223	25.618	35.106	21:18.843	4	1:56.676	23.490	30.279	26.771	36.136	8:32.289	
10	1:53.314	22.830	29.176	26.058	35.250	23:12.157	5	1:56.399	23.470	30.083	26.632	36.214	10:28.688	
11	1:59.708	29.240	29.725	25.690	35.053	25:11.865	6	1:56.926	23.634	30.015	26.707	36.570	12:25.614	
12	1:58.801	23.151	34.383	26.082	35.185	27:10.666	7	2:07.753 B	23.723	30.286	27.310	46.434	14:33.367	
13	1:56.888	22.756	29.088	26.473	38.571	29:07.554	8	5:43.411	4:01.632	32.063	32.707	37.009	20:16.778	
							9	2:06.181 B	24.099	30.480	26.661	44.941	22:22.959	
							10	2:46.590	1:06.261	33.314	29.297	37.718	25:09.549	
							11	1:57.213	24.423	30.182	26.821	35.787	27:06.762	
							12	1:55.578	23.151	29.815	26.385	36.227	29:02.340	
5	ADRIAN COVARRUBIAS ESP													
	PS RACINGTEAM KAWASAKI													
1	2:49.836	1:15.668	32.252	26.115	35.801	2:49.836	18	IVAN MUÑOZ ESP						
2	1:53.970	23.083	29.680	25.741	35.466	4:43.806		TCM TEAM KAWASAKI						
3	1:53.621	22.901	29.577	25.675	35.468	6:37.427	1	4:12.917 B	2:23.709	32.691	28.652	47.865	4:12.917	
4	1:53.564	22.838	29.567	25.818	35.341	8:30.991	2	2:29.320	56.847	30.256	26.331	35.886	6:42.237	
5	1:54.293	22.902	29.784	26.034	35.573	10:25.284	3	1:55.152	23.709	29.640	26.065	35.738	8:37.389	
6	2:06.628 B	26.012	29.345	26.030	45.241	12:31.912	4	1:54.513	23.207	29.848	26.160	35.298	10:31.902	
7	9:24.076			25.746	35.476	21:55.988	5	1:54.147	23.053	29.718	25.984	35.392	12:26.049	
8	1:53.949			25.845	35.343	23:49.937	6	2:04.833 B	23.508	29.905	26.557	44.863	14:30.882	
9	1:53.087			25.642	35.160	25:43.024	7	4:53.956	3:15.746	32.333	28.545	37.332	19:24.838	
10	1:54.708			25.634	35.775	27:37.732	8	1:55.096	23.896	29.783	26.156	35.261	21:19.934	
11	1:53.881			25.904	35.341	29:31.613	9	1:54.926	22.888	29.812	26.031	36.195	23:14.860	
							10	1:54.632	23.354	29.746	26.170	35.362	25:09.492	
							11	1:55.313	23.966	29.966	26.171	35.210	27:04.805	
							12	1:55.268	23.423	30.250	26.454	35.141	29:00.073	
7	GUERAU SIMO ESP													
	I+DENT JUNIOR RACING TEAM YAMAHA													
1	2:57.185	1:23.619	30.793	26.723	36.050	2:57.185	19	LORENZO MOHEDANO ESP						
2	1:56.759	23.344	30.310	26.742	36.363	4:53.944		TCM TEAM KAWASAKI						
3	1:56.356	23.556	30.146	26.812	35.842	6:50.300	1	3:36.412	2:01.949	31.478	26.748	36.237	3:36.412	
4	1:56.195	23.572	30.085	26.615	35.923	8:46.495	2	1:56.226	23.251	30.469	26.423	36.083	5:32.638	
5	1:54.744	23.144	29.922	25.960	35.718	10:41.239	3	1:56.855	23.359	30.734	26.533	36.229	7:29.493	
6	1:58.051	23.094	33.215	26.102	35.640	12:39.290	4	1:55.376	23.117	30.390	26.277	35.592	9:24.869	
7	1:54.950	23.094	29.754	26.150	35.952	14:34.240	5	1:54.828	22.961	30.100	26.099	35.668	11:19.697	
8	2:09.790 B	23.868	30.793	26.313	48.816	16:44.030	6	2:09.554 B	23.134	30.180	28.253	47.987	13:29.251	
9	5:24.344 B					22:08.374	7	4:04.514	2:32.237	30.648	26.157	35.472	17:33.765	
10	2:27.169	53.609	30.881	26.482	36.197	24:35.543	8	1:55.610	23.054	30.450	26.314	35.792	19:29.375	
11	1:54.428	23.255	29.936	25.931	35.306	26:29.971	9	1:55.934			26.163	35.942	21:25.309	
12	1:53.855	23.019	29.749	25.754	35.333	28:23.826	10	1:55.396			26.317	35.687	23:20.705	
							11	1:54.703			26.370	35.263	25:15.408	
16	DINIS BORGES POR													
	SPEED MASTER RACING TEAM KAWASAKI													
1	3:39.601	2:06.521	30.624	26.646	35.810	3:39.601	20	LUCAS MOHEDANO ESP						
2	1:54.991	23.156	29.909	26.228	35.698	5:34.592		TCM TEAM KAWASAKI						
3	1:54.783	23.130	29.481	26.127	36.045	7:29.375	1	12:04.068	...	32.476	27.374	37.009	12:04.068	
4	1:54.472	23.138	29.674	26.116	35.544	9:23.847	2	2:11.154	26.622	32.237	34.600	37.695	14:15.222	
5	1:54.169	23.168	29.539	26.013	35.449	11:18.016	3	2:00.790	23.941	30.507	26.710	39.632	16:16.012	
6	2:09.875 B	26.895	30.053	27.434	45.493	13:27.891	4	2:14.360 B	28.602	31.216	27.325	47.217	18:30.372	
7	4:04.892	2:32.971	30.057	26.013	35.851	17:32.783	5	2:52.335	1:13.865	31.606	30.172	36.692	21:22.707	
8	1:53.795	23.101	29.456	25.737	35.501	19:26.578	6	1:57.387			26.694	36.319	23:20.094	
9	1:54.846	23.563	29.716	26.233	35.334	21:21.424								



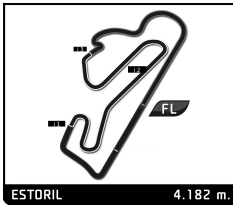
SS300

ESBK CIRCUITO DO ESTORIL II 30 AGOSTO Y 1 SEP. ENTRENAMIENTOS LIBRE 2

Vuelta a vuelta

— Vuelta invalidada ■ Mejor Personal ■ Mejor de la sesión B Cruzando por el pit lane

Vlt.	Tiempo	Sector 1	Sector 2	Sector 3	Sector 4	T. Sesión	Vlt.	Tiempo	Sector 1	Sector 2	Sector 3	Sector 4	T. Sesión
7	1:56.667			26.742	35.956	25:16.761	1	2:43.257	1:06.003	31.082	30.307	35.865	2:43.257
8	1:56.781	23.323	30.713	26.607	36.138	27:13.542	2	1:54.634	22.908	30.006	25.891	35.829	4:37.891
9	1:56.845	23.584	30.625	26.623	36.013	29:10.387	3	1:54.105	23.053	29.896	25.737	35.419	6:31.996
21 RAN YOCHAY ISR							4	1:54.081	22.970	29.803	25.733	35.575	8:26.077
KAWASAKI PALMETO PL RACING KAWASAKI							5	2:01.250	23.049	30.827	28.175	39.199	10:27.327
1	2:57.200	1:16.604	34.557	28.384	37.655	2:57.200	6	2:16.419 B	22.961	29.573	31.874	52.011	12:43.746
2	2:00.680	24.819	30.704	27.758	37.399	4:57.880	7	2:26.489 B	43.559	30.491	26.380	46.059	15:10.235
3	2:00.432	24.269	30.778	27.729	37.656	6:58.312	8	2:22.959	52.248	29.666	25.863	35.182	17:33.194
4	1:59.906	24.148	30.688	27.771	37.299	8:58.218	9	1:53.451	22.871	29.358	25.725	35.497	19:26.645
5	1:59.620	24.128	30.675	27.735	37.082	10:57.838	10	2:00.391	27.663	31.666	25.806	35.256	21:27.036
6	1:59.476	24.119	30.738	27.444	37.175	12:57.314	11	1:52.930	22.692	29.118	25.825	35.295	23:19.966
7	1:59.893	24.147	31.152	27.391	37.203	14:57.207	12	1:53.510	22.903	29.430	25.856	35.321	25:13.476
8	2:05.805	24.204	30.756	33.770	37.075	17:03.012	13	1:58.454	22.731	30.967	29.211	35.545	27:11.930
9	1:59.080	23.853	30.739	27.514	36.974	19:02.092	14	1:56.725	22.875	29.478	29.145	35.227	29:08.655
10	1:59.262	24.156	30.610	27.293	37.203	21:01.354	26 DANIEL OCETE ESP						
11	1:58.902	24.005	30.801	27.361	36.735	23:00.256	I+ DENT JUNIOR RACING TEAM YAMAHA						
12	1:58.527			27.445	36.841	24:58.783	1	4:03.178	2:30.641	30.310	26.583	35.644	4:03.178
13	1:58.732	24.088	30.573	27.269	36.802	26:57.515	2	1:53.722	23.128	29.556	25.880	35.158	5:56.900
14	1:58.881	24.138	30.723	27.224	36.796	28:56.396	3	1:53.051	22.962	29.309	25.749	35.031	7:49.951
22 AROA FERNANDEZ ESP							4	1:55.641	22.890	31.632	25.851	35.268	9:45.592
I+DENT JUNIOR RACING TEAM YAMAHA							5	2:02.995 B	22.863	29.195	26.129	44.808	11:48.587
1	2:59.979	1:17.063	34.933	30.617	37.366	2:59.979	6	2:31.963 B					14:20.550
2	2:00.299	24.790	30.837	27.696	36.976	5:00.278	7	7:29.707 B					21:50.257
3	1:59.845	24.450	30.880	27.620	36.895	7:00.123	8	2:45.679	1:11.853	30.869	26.652	36.305	24:35.936
4	1:59.591	24.333	30.720	27.650	36.888	8:59.714	9	1:53.753	22.970	29.708	25.877	35.198	26:29.689
5	2:00.173	24.364	31.026	27.579	37.204	10:59.887	10	1:52.978	22.952	29.380	25.635	35.011	28:22.667
6	1:59.771	24.427	30.789	27.420	37.135	12:59.658	28 PIETRO ANASTASI SUI						
7	1:59.774	24.150	30.763	27.645	37.216	14:59.432	ARCO SASH MOTOR UNIVERSITY 1 YAMAHA						
8	1:59.633	24.287	30.865	27.578	36.903	16:59.065	1	2:40.992	1:06.186	30.728	27.902	36.176	2:40.992
9	1:59.877	24.336	30.973	27.589	36.979	18:58.942	2	2:00.334	23.298	30.322	29.899	36.815	4:41.326
10	1:59.579	24.330	31.018	27.377	36.854	20:58.521	3	1:54.623	23.079	29.768	26.229	35.547	6:35.949
11	1:59.809	24.114	31.139	27.278	37.278	22:58.330	4	1:54.950	23.308	29.928	26.112	35.602	8:30.899
12	1:59.977	24.231	31.273	27.564	36.909	24:58.307	5	1:54.667	23.208	29.512	26.485	35.462	10:25.566
13	1:59.709	24.248	30.970	27.574	36.917	26:58.016	6	1:55.282	23.272	30.103	26.398	35.509	12:20.848
14	1:59.732	24.332	30.962	27.423	37.015	28:57.748	7	1:56.022	23.204	29.689	26.658	36.471	14:16.870
23 RUBEN MONTERO ESP							8	2:07.454 B	23.001	29.614	26.606	48.233	16:24.324
YAMAHA							9	2:59.050	1:19.719	31.462	31.814	36.055	19:23.374
1	2:51.551	1:15.849	32.372	27.180	36.150	2:51.551	10	1:54.953	23.142	30.164	26.154	35.493	21:18.327
2	1:56.734	23.669	30.480	26.479	36.106	4:48.285	11	1:56.276	22.944	29.770	26.884	36.678	23:14.603
3	1:57.152	23.288	30.308	27.528	36.028	6:45.437	12	1:56.595	24.498	29.646	26.634	35.817	25:11.198
4	1:56.425	23.479	30.498	26.342	36.106	8:41.862	13	1:56.010	23.567	29.694	26.838	35.911	27:07.208
5	1:59.114	24.041	31.376	26.980	36.717	10:40.976	14	1:54.897	23.065	29.609	26.359	35.864	29:02.105
6	1:57.567	23.713	30.675	26.729	36.450	12:38.543	35 JOSE EMILIANO ZAMUDIO MEX						
7	1:56.011	23.425	30.284	26.325	35.977	14:34.554	PONS MOTOSPORT ITALIKA RACIN KAWASAKI						
8	1:55.899	23.705	30.093	26.530	35.571	16:30.453	1	2:51.508	1:14.958	33.254	26.934	36.362	2:51.508
9	1:57.440	23.783	31.003	26.589	36.065	18:27.893	2	1:56.082	23.494	29.967	26.247	36.374	4:47.590
10	1:56.358	23.571	30.590	26.285	35.912	20:24.251	3	1:54.515	23.179	29.603	26.043	35.690	6:42.105
11	2:13.269 B	24.153	32.486	27.967	48.663	22:37.520	4	1:54.404	23.072	29.773	26.002	35.557	8:36.509
12	2:32.226	48.608	35.112	30.288	38.218	25:09.746	5	1:54.964	23.008	29.877	26.122	35.957	10:31.473
13	1:56.391	23.953	30.309	26.542	35.587	27:06.137	6	1:54.744	23.298	29.995	26.180	35.271	12:26.217
14	1:56.411	23.425	30.208	26.739	36.039	29:02.548	7	1:59.814	23.258	30.168	27.089	39.299	14:26.031
24 MICHEL AGAZZI ITA							8	2:18.818 B	25.522	32.837	32.129	48.330	16:44.849
YAMAHA MS RACING YAMAHA							9	2:52.656	1:19.406	30.522	26.514	36.214	19:37.505
							10	1:56.152	23.448	29.956	26.475	36.273	21:33.657



SS300

ESBK CIRCUITO DO ESTORIL II 30 AGOSTO Y 1 SEP.
ENTRENAMIENTOS LIBRE 2

Vuelta a vuelta

— Vuelta invalidada ■ Mejor Personal ■ Mejor de la sesión B Cruzando por el pit lane

Vlt.	Tiempo	Sector 1	Sector 2	Sector 3	Sector 4	T. Sesión	Vlt.	Tiempo	Sector 1	Sector 2	Sector 3	Sector 4	T. Sesión
11	1:56.482	23.582	30.223	26.415	36.262	23:30.139	3	2:18.374 B	23.425	30.362	29.010	55.577	7:11.952
12	2:06.526	25.265	33.326	30.575	37.360	25:36.665	4	3:14.018	1:35.272	34.678	27.313	36.755	10:25.970
13	1:55.555	23.332	29.812	26.130	36.281	27:32.220	5	1:56.199	23.541	30.318	26.550	35.790	12:22.169
14	1:55.121	22.863	29.846	26.328	36.084	29:27.341	6	2:03.674	23.742	33.416	28.431	38.085	14:25.843
42 ROSA JIMENEZ ESP							78 MARTIM LIMA POR						
ADN VG RACING KAWASAKI							DEZA-BOX77 RACING TEAM KAWASAKI						
1	2:57.288	1:24.638	30.632	26.432	35.586	2:57.288	1	3:38.790	1:38.632	32.486	42.569	45.103	3:38.790
2	1:56.562	23.891	29.878	26.672	36.121	4:53.850	2	1:58.502	23.708	30.341	26.887	37.566	5:37.292
3	1:56.440	23.517	30.159	26.751	36.013	6:50.290	3	1:57.586	23.694	30.279	26.919	36.694	7:34.878
4	1:56.736	23.854	29.764	26.441	36.677	8:47.026	4	1:57.071	23.542	30.187	26.763	36.579	9:31.949
5	1:55.771	23.740	29.973	26.181	35.877	10:42.797	5	2:10.977 B	25.742	31.699	28.105	45.431	11:42.926
6	1:55.599	23.365	30.001	26.297	35.936	12:38.396	6	5:17.507	3:42.875	30.879	26.944	36.809	17:00.433
7	1:55.863	23.383	30.060	26.232	36.188	14:34.259	7	1:58.843	23.606	30.515	27.691	37.031	18:59.276
8	1:56.165	23.557	30.141	26.590	35.877	16:30.424	8	1:57.492	23.427	30.469	26.790	36.806	20:56.768
9	2:06.018 B	23.705	32.144	26.499	43.670	18:36.442	9	1:57.325	23.569	30.212	26.741	36.803	22:54.093
10	3:26.152	1:53.914	30.310	26.201	35.727	22:02.594	10	2:18.681	26.939	41.049	27.993	42.700	25:12.774
11	1:55.125	23.460	29.997	26.072	35.596	23:57.719	11	1:55.845	23.209	30.089	26.436	36.111	27:08.619
12	1:55.469	23.348	29.914	26.408	35.799	25:53.188	12	1:56.504	23.502	30.112	26.530	36.360	29:05.123
13	1:56.324	23.703	30.299	26.315	36.007	27:49.512							
14	1:55.742	23.451	30.136	26.230	35.925	29:45.254							
48 JESUS MARTIM POR							79 TOMAS ALONSO POR						
TEAM MOTO CLUBE DE LOULE KAWASAKI							PONS MOTOSPORT ITALIKA RACIN KAWASAKI						
1	2:40.376	1:06.454	30.811	26.842	36.269	2:40.376	1	2:54.401	1:22.102	30.147	26.613	35.539	2:54.401
2	1:56.172	23.535	30.526	26.221	35.890	4:36.548	2	1:53.209	22.576	29.303	25.980	35.350	4:47.610
3	1:55.557	23.266	30.410	26.192	35.689	6:32.105	3	1:55.447	22.512	29.481	27.632	35.822	6:43.057
4	1:54.310	23.067	29.627	25.897	35.719	8:26.415	4	1:52.403	22.783	29.169	25.544	34.907	8:35.460
5	2:04.651 B	22.905	30.348	26.752	44.646	10:31.066	5	1:51.969	22.482	29.066	25.463	34.958	10:27.429
6	3:48.432	2:09.325	32.522	26.897	39.688	14:19.498	6	2:15.487 B	22.645	29.524	31.679	51.639	12:42.916
7	2:07.765 B	27.303	29.985	26.942	43.535	16:27.263	7	4:55.263 B	3:18.055	29.700	25.944	41.564	17:38.179
8	2:57.853	1:20.573	30.902	30.354	36.024	19:25.116	8	2:14.581	43.535	29.615	26.073	35.358	19:52.760
9	1:54.443			26.030	35.233	21:19.559	9	1:52.985	22.590	29.455	25.584	35.356	21:45.745
10	1:55.140			26.066	36.357	23:14.699	10	1:52.589	22.644	29.317	25.571	35.057	23:38.334
11	1:55.381			26.315	35.601	25:10.080	11	1:58.384	22.629	29.326	29.264	37.165	25:36.718
12	1:55.548			25.829	35.776	27:05.628	12	1:55.262	22.689	29.413	27.796	35.364	27:31.980
13	1:54.510			26.079	35.541	29:00.138	13	1:52.716	22.572	29.492	25.513	35.139	29:24.696
61 URIEL HIDALGO ESP							83 ASTRID HORTENCIA MADRIGAL MEX						
DEZA-BOX77 RACING TEAM KAWASAKI							PONS MOTOSPORT ITALIKA RACIN KAWASAKI						
1	3:35.841	2:03.906	30.640	26.040	35.255	3:35.841	1	2:52.541	1:16.289	32.922	26.815	36.515	2:52.541
2	1:53.684	23.075	29.804	25.713	35.092	5:29.525	2	1:56.844	23.662	30.268	26.503	36.411	4:49.385
3	1:56.386	22.857	29.743	25.907	37.879	7:25.911	3	1:55.843	23.216	30.040	26.602	35.985	6:45.228
4	1:52.849	22.768	29.556	25.593	34.932	9:18.760	4	2:19.309 B	23.631	30.964	35.469	49.245	9:04.537
5	1:52.904	22.844	29.493	25.616	34.951	11:11.664	5	5:10.881	3:36.561	31.338	27.172	35.810	14:15.418
6	2:16.206 B	22.978	37.004	30.976	45.248	13:27.870	6	1:55.620	23.068	30.339	26.422	35.791	16:11.038
7	6:05.351	4:34.484	29.595	26.162	35.110	19:33.221	7	2:13.049	23.818	33.298	37.330	38.603	18:24.087
8	1:52.433	22.791	29.444	25.436	34.762	21:25.654	8	2:16.471 B	30.103	32.795	28.667	44.906	20:40.558
9	1:52.555	22.459	29.226	25.740	35.130	23:18.209	9	2:34.491	58.515	31.803	27.406	36.767	23:15.049
10	1:52.262	22.566	28.985	25.677	35.034	25:10.471	10	1:56.563	23.760	29.935	27.137	35.731	25:11.612
11	1:53.811	23.418	29.814	25.593	34.986	27:04.282	11	1:56.108	23.640	30.170	26.228	36.070	27:07.720
12	2:03.335	30.473	29.513	27.984	35.365	29:07.617	12	2:03.111	30.830	30.436	26.229	35.616	29:10.831
64 SARA SANCHEZ ESP													
ILUSION RACING KAWASAKI													
1	2:57.188	1:15.075	36.785	28.211	37.117	2:57.188							
2	1:56.390	23.599	30.019	26.623	36.149	4:53.578							



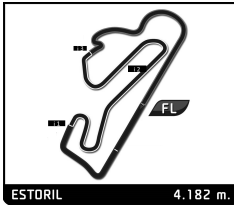
SS300

ESBK CIRCUITO DO ESTORIL II 30 AGOSTO Y 1 SEP. ENTRENAMIENTOS LIBRE 2

Vuelta a vuelta

— Vuelta invalidada ■ Mejor Personal ■ Mejor de la sesión B Cruzando por el pit lane

Vlt.	Tiempo	Sector 1	Sector 2	Sector 3	Sector 4	T. Sesión	Vlt.	Tiempo	Sector 1	Sector 2	Sector 3	Sector 4	T. Sesión	
88	TOMAS MARIN COL						12	1:55.870	22.982	29.774	26.842	36.272	25:34.303	
	DEZA-BOX77 RACING TEAM KAWASAKI						13	1:57.731	23.816	30.598	26.887	36.430	27:32.034	
	1	3:35.890	2:02.577	30.778	26.637	35.898	3:35.890	14	1:55.046	23.272	29.609	26.243	35.922	29:27.080
	2	1:54.795	23.226	29.790	26.203	35.576	5:30.685							
	3	1:55.201	23.270	29.958	26.236	35.737	7:25.886							
	4	2:12.449B	25.827	34.363	27.198	45.061	9:38.335							
	5	9:54.961	8:23.033	30.143	26.118	35.667	19:33.296							
	6	1:53.420	22.990	29.596	25.748	35.086	21:26.716							
	7	1:53.663			26.319	35.246	23:20.379							
	8	1:53.529	23.176	29.531	25.810	35.012	25:13.908							
	9	1:56.578			26.853	36.958	27:10.486							
10	1:56.932	23.225	29.432	25.980	38.295	29:07.418								
91	VASCO ANTONIO GONÇALVES POR													
	KAWASAKI													
	1	3:39.882	1:59.884	35.464	27.344	37.190	3:39.882							
	2	1:55.940	23.233	29.913	26.909	35.885	5:35.822							
	3	1:54.948	23.032	29.786	26.510	35.620	7:30.770							
	4	1:54.042	22.918	29.746	26.250	35.128	9:24.812							
	5	1:53.902	22.817	29.410	26.129	35.546	11:18.714							
	6	2:10.140B	23.000	30.071	31.257	45.812	13:28.854							
	7	4:06.214	2:34.515	29.953	26.276	35.470	17:35.068							
	8	1:59.020	23.530	29.754	30.278	35.458	19:34.088							
	9	1:53.696	22.753	29.468	26.058	35.417	21:27.784							
	10	1:54.088	22.701	29.542	26.371	35.474	23:21.872							
	11	1:53.778	22.894	29.357	26.267	35.260	25:15.650							
12	2:06.708B	23.060	30.355	29.549	43.744	27:22.358								
92	JOEL AZNAR ESP													
	ILUSION TEAM KAWASAKI													
	1	2:46.152	1:07.495	31.872	29.292	37.493	2:46.152							
	2	1:58.340	23.881	30.441	27.247	36.771	4:44.492							
	3	1:57.005	23.468	30.165	26.762	36.610	6:41.497							
	4	1:55.835	23.460	29.970	26.547	35.858	8:37.332							
	5	1:55.197	23.189	29.876	26.451	35.681	10:32.529							
	6	2:01.979	23.258	29.830	26.302	42.589	12:34.508							
	7	1:59.721	23.703	32.402	27.204	36.412	14:34.229							
	8	2:11.477B	23.771	29.915	29.889	47.902	16:45.706							
	9	6:28.959	4:50.709	34.079	27.227	36.944	23:14.665							
	10	1:55.773	23.385	29.916	26.430	36.042	25:10.438							
11	1:55.411	23.917	29.753	26.183	35.558	27:05.849								
12	1:55.055	23.201	29.705	26.378	35.771	29:00.904								
95	RICARDO RODRÍGUEZ MEX													
	PONS MOTOSPORT ITALIKA RACIN KAWASAKI													
	1	2:43.133	1:07.957	31.254	27.102	36.820	2:43.133							
	2	1:58.295	23.475	30.361	26.617	37.842	4:41.428							
	3	1:56.516	23.442	30.073	26.672	36.329	6:37.944							
	4	1:56.239	23.134	30.181	26.643	36.281	8:34.183							
	5	1:56.096	23.324	29.649	26.859	36.264	10:30.279							
	6	1:55.733	23.243	30.125	26.466	35.899	12:26.012							
	7	1:56.437	23.921	29.715	26.675	36.126	14:22.449							
	8	1:57.536	23.631	30.325	27.107	36.473	16:19.985							
	9	2:04.339B	23.696	30.249	26.694	43.700	18:24.324							
10	3:17.157	1:41.669	31.525	26.934	37.029	21:41.481								
11	1:56.952	23.442	30.626	26.526	36.358	23:38.433								



SS300

ESBK CIRCUITO DO ESTORIL II 30 AGOSTO Y 1 SEP. ENTRENAMIENTOS LIBRE 2

Mejores tiempos de sector

Sector 1			Sector 2			Sector 3			Sector 4			Vuelta		Mejor Vuelta
Pos	Nº Piloto	Tiempo	Nº Piloto	Tiempo	Nº Piloto	Tiempo	Nº Piloto	Tiempo	Pos	Nº	Ideal			
1	61 U.HIDALGO	22.459	61 U.HIDALGO	28.985	61 U.HIDALGO	25.436	61 U.HIDALGO	34.762	1	61	1:51.642	1:52.262 (2)		
2	79 T.ALONSO	22.482	1 G.SANCHEZ	29.053	79 T.ALONSO	25.463	79 T.ALONSO	34.907	2	79	1:51.918	1:51.969 (1)		
3	1 G.SANCHEZ	22.567	79 T.ALONSO	29.066	1 G.SANCHEZ	25.483	26 D.OCETE	35.011	3	1	1:52.156	1:52.676 (3)		
4	24 M.AGAZZI	22.583	16 D.BORGES	29.117	5 A.COVARRUBIAS	25.634	88 T.MARIN	35.012	4	24	1:52.608	1:52.930 (4)		
5	64 S.SANCHEZ	22.651	24 M.AGAZZI	29.118	26 D.OCETE	25.634	1 G.SANCHEZ	35.053	5	26	1:52.650	1:52.978 (5)		
6	91 V.GONÇALVES	22.701	88 T.MARIN	29.187	24 M.AGAZZI	25.725	16 D.BORGES	35.097	6	16	1:52.886	1:53.795 (9)		
7	28 P.ANASTASI	22.755	26 D.OCETE	29.195	16 D.BORGES	25.737	91 V.GONÇALVES	35.128	7	88	1:52.937	1:53.420 (7)		
8	26 D.OCETE	22.810	5 A.COVARRUBIAS	29.345	88 T.MARIN	25.748	18 I.MUÑOZ	35.141	8	5	1:52.977	1:53.087 (6)		
9	48 J.MARTIM	22.830	91 V.GONÇALVES	29.357	7 G.SIMO	25.754	5 A.COVARRUBIAS	35.160	9	91	1:53.244	1:53.696 (8)		
10	5 A.COVARRUBIAS	22.838	28 P.ANASTASI	29.483	48 J.MARTIM	25.829	24 M.AGAZZI	35.182	10	48	1:53.519	1:54.310 (13)		
11	35 J.ZAMUDIO	22.863	92 J.AZNAR	29.566	64 S.SANCHEZ	25.957	48 J.MARTIM	35.233	11	64	1:53.572	1:54.138 (11)		
12	18 I.MUÑOZ	22.888	35 J.ZAMUDIO	29.603	18 I.MUÑOZ	25.984	19 L.MOHEDANO	35.263	12	18	1:53.646	1:54.147 (12)		
13	16 D.BORGES	22.935	95 R.RODRÍGUEZ	29.609	35 J.ZAMUDIO	26.002	35 J.ZAMUDIO	35.271	13	35	1:53.739	1:54.404 (14)		
14	19 L.MOHEDANO	22.961	48 J.MARTIM	29.627	91 V.GONÇALVES	26.058	7 G.SIMO	35.306	14	28	1:53.812	1:54.623 (15)		
15	95 R.RODRÍGUEZ	22.982	18 I.MUÑOZ	29.633	42 R.JIMENEZ	26.072	64 S.SANCHEZ	35.314	15	7	1:53.828	1:53.855 (10)		
16	88 T.MARIN	22.990	64 S.SANCHEZ	29.650	19 L.MOHEDANO	26.099	28 P.ANASTASI	35.462	16	92	1:54.345	1:55.055 (18)		
17	7 G.SIMO	23.019	17 C.MULOT	29.666	28 P.ANASTASI	26.112	92 J.AZNAR	35.558	17	19	1:54.423	1:54.703 (16)		
18	92 J.AZNAR	23.038	7 G.SIMO	29.749	92 J.AZNAR	26.183	23 R.MONTERO	35.571	18	95	1:54.733	1:55.046 (17)		
19	83 A.MADRIGAL	23.056	42 R.JIMENEZ	29.764	83 A.MADRIGAL	26.228	42 R.JIMENEZ	35.586	19	42	1:54.770	1:55.125 (19)		
20	23 R.MONTERO	23.063	83 A.MADRIGAL	29.935	95 R.RODRÍGUEZ	26.243	83 A.MADRIGAL	35.616	20	83	1:54.835	1:55.620 (21)		
21	17 C.MULOT	23.094	78 M.LIMA	30.089	23 R.MONTERO	26.285	17 C.MULOT	35.787	21	17	1:54.932	1:55.578 (20)		
22	78 M.LIMA	23.209	23 R.MONTERO	30.092	17 C.MULOT	26.385	95 R.RODRÍGUEZ	35.899	22	23	1:55.011	1:55.899 (23)		
23	20 L.MOHEDANO	23.249	19 L.MOHEDANO	30.100	78 M.LIMA	26.436	20 L.MOHEDANO	35.956	23	78	1:55.845	1:55.845 (22)		
24	42 R.JIMENEZ	23.348	20 L.MOHEDANO	30.490	20 L.MOHEDANO	26.607	78 M.LIMA	36.111	24	20	1:56.302	1:56.667 (24)		
25	21 R.YOCHAY	23.853	21 R.YOCHAY	30.573	21 R.YOCHAY	27.224	21 R.YOCHAY	36.735	25	21	1:58.385	1:58.527 (25)		
26	22 A.FERNANDEZ	24.114	22 A.FERNANDEZ	30.720	22 A.FERNANDEZ	27.278	22 A.FERNANDEZ	36.854	26	22	1:58.966	1:59.579 (26)		



SS300

ESBK CIRCUITO DO ESTORIL II 30 AGOSTO Y 1 SEP.
Después de ENTRENAMIENTOS LIBRE 2

Velocidad máxima del evento

Nº Piloto	Equipo	Moto	Clase	V.Max	Vit.	Sesión
91 VASCO ANTONIO GONÇALVES		KAWASAKI	K	216.9	8	ENTRENAMIENTOS LII
1 GONZALO SANCHEZ	ARCO SASH MOTOR UNIVERSITY TEAM	YAMAHA	Y	215.2	2	ENTRENAMIENTOS LII
28 PIETRO ANASTASI	ARCO SASH MOTOR UNIVERSITY TEAM	YAMAHA	Y	215.2	13	ENTRENAMIENTOS LII
79 TOMAS ALONSO	PONS MOTOSPORT ITALIKA RACING	KAWASAKI	K	215.2	6	ENTRENAMIENTOS LII
18 IVAN MUÑOZ	TCM TEAM	KAWASAKI	K	213.9	4	ENTRENAMIENTOS LII
83 ASTRID HORTENCIA MADRIGAL	PONS MOTOSPORT ITALIKA RACING	KAWASAKI	K	213.5	10	ENTRENAMIENTOS LII
24 MICHEL AGAZZI	YAMAHA MS RACING	YAMAHA	Y	213.1	10	ENTRENAMIENTOS LII
64 SARA SANCHEZ	ILUSION RACING	KAWASAKI		213.1	13	ENTRENAMIENTOS LII
61 URIEL HIDALGO	DEZA-BOX77 RACING TEAM	KAWASAKI	K	212.3	9	ENTRENAMIENTOS LII
7 GUERAU SIMO	I+DENT JUNIOR RACING TEAM	YAMAHA	Y	212.3	3	ENTRENAMIENTOS LII
92 JOEL AZNAR	ILUSION TEAM	KAWASAKI	K	212.3	5	ENTRENAMIENTOS LII
16 DINIS BORGES	SPEED MASTER RACING TEAM	KAWASAKI	K	211.8	15	ENTRENAMIENTOS LII
17 CARLA MULOT		YAMAHA	Y	211.8	13	ENTRENAMIENTOS LII
35 JOSE EMILIANO ZAMUDIO	PONS MOTOSPORT ITALIKA RACING	KAWASAKI	K	211.4	7	ENTRENAMIENTOS LII
19 LORENZO MOHEDANO	TCM TEAM	KAWASAKI	K	210.6	11	ENTRENAMIENTOS LII
42 ROSA JIMENEZ	ADN VG RACING	KAWASAKI	K	210.2	3	ENTRENAMIENTOS LII
88 TOMAS MARIN	DEZA-BOX77 RACING TEAM	KAWASAKI	K	209.8	8	ENTRENAMIENTOS LII
26 DANIEL OCETE	I+ DENT JUNIOR RACING TEAM	YAMAHA	Y	209.4	9	ENTRENAMIENTOS LII
95 RICARDO RODRÍGUEZ	PONS MOTOSPORT ITALIKA RACING	KAWASAKI	K	209.4	12	ENTRENAMIENTOS LII
5 ADRIAN COVARRUBIAS	PS RACINGTEAM	KAWASAKI	K	208.6	5	ENTRENAMIENTOS LII
48 JESUS MARTIM	TEAM MOTO CLUBE DE LOULE	KAWASAKI	K	208.2	12	ENTRENAMIENTOS LII
21 RAN YOCHAY	KAWASAKI PALMETO PL RACING	KAWASAKI	K	207.8	13	ENTRENAMIENTOS LII
20 LUCAS MOHEDANO	TCM TEAM	KAWASAKI	K	207.5	7	ENTRENAMIENTOS LII
23 RUBEN MONTERO		YAMAHA	Y	207.1	15	ENTRENAMIENTOS LII
78 MARTIM LIMA	DEZA-BOX77 RACING TEAM	KAWASAKI	K	207.1	3	ENTRENAMIENTOS LII
22 AROA FERNANDEZ	I+DENT JUNIOR RACING TEAM	YAMAHA	Y	199.9	11	ENTRENAMIENTOS LII



SS300

ESBK CIRCUITO DO ESTORIL II 30 AGOSTO Y 1 SEP. ENTRENAMIENTOS LIBRE 2

Secuencia de vueltas rápidas

T. Sesión	Nº Piloto	Equipo	Moto	Clase	Tiempo	Km/h	Vlt.
4:35.509	17 CARLA MULOT		YAMAHA	Y	2:06.026	119.5	2
4:36.548	48 JESUS MARTIM	TEAM MOTO CLUBE DE LOULE	KAWASAKI	K	1:56.172	129.6	2
4:37.891	24 MICHEL AGAZZI	YAMAHA MS RACING	YAMAHA	Y	1:54.634	131.3	2
4:43.806	5 ADRIAN COVARRUBIAS	PS RACINGTEAM	KAWASAKI	K	1:53.970	132.1	2
4:47.610	79 TOMAS ALONSO	PONS MOTOSPORT ITALIKA RACING	KAWASAKI	K	1:53.209	133.0	2
7:49.951	26 DANIEL OCETE	I+ DENT JUNIOR RACING TEAM	YAMAHA	Y	1:53.051	133.2	3
8:34.088	1 GONZALO SANCHEZ	ARCO SASH MOTOR UNIVERSITY TEAM	YAMAHA	Y	1:52.676	133.6	4
8:35.460	79 TOMAS ALONSO	PONS MOTOSPORT ITALIKA RACING	KAWASAKI	K	1:52.403	133.9	4
10:27.429	79 TOMAS ALONSO	PONS MOTOSPORT ITALIKA RACING	KAWASAKI	K	1:51.969	134.5	5



SS300

ESBK CIRCUITO DO ESTORIL II 30 AGOSTO Y 1 SEP. ENTRENAMIENTOS LIBRE 2

Mejores velocidades máximas

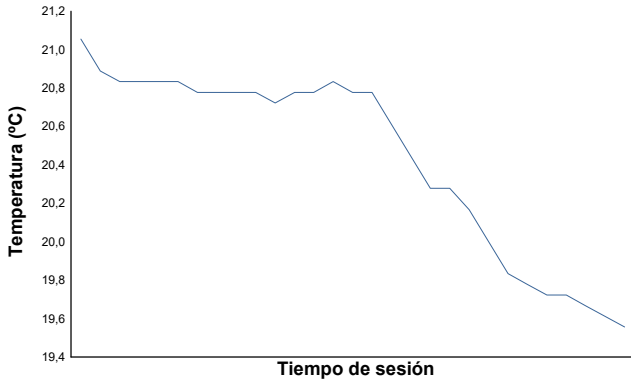
Nº Piloto	Equipo	Clase	V.Max 1		V.Max 2		V.Max 3		V.Max 4		V.Max 5		Pro
			Km/h	Vlt.	Km/h	Vlt.	Km/h	Vlt.	Km/h	Vlt.	Km/h	Vlt.	
91 VASCO ANTONIO GONÇAL		K	216.9	8	216.4	11	214.7	10	214.3	2	213.5	12	215,2
1 GONZALO SANCHEZ	ARCO SASH MOTOR UNIVERSITY TEAM	Y	215.2	2	214.3	12	213.5	3	210.2	13	210.2	9	212,7
28 PIETRO ANASTASI	ARCO SASH MOTOR UNIVERSITY TEAM	Y	215.2	13	213.5	14	210.6	6	209.8	4	207.8	12	211,4
79 TOMAS ALONSO	PONS MOTOSPORT ITALIKA RACING	K	215.2	6	213.5	4	212.7	3	212.3	5	211.8	12	213,1
18 IVAN MUÑOZ	TCM TEAM	K	213.9	4	211.4	10	208.6	9	207.1	5	206.3	6	209,5
83 ASTRID HORTENCIA MADRIP	PONS MOTOSPORT ITALIKA RACING	K	213.5	10	210.2	11	209.8	12	207.1	6	206.7	3	209,5
24 MICHEL AGAZZI	YAMAHA MS RACING	Y	213.1	10	210.6	11	209.4	2	207.1	9	206.3	14	209,3
7 GUERAU SIMO	I+DENT JUNIOR RACING TEAM	Y	212.3	3	207.8	12	207.1	6	205.5	7	204.4	2	207,4
61 URIEL HIDALGO	DEZA-BOX77 RACING TEAM	K	212.3	9	210.2	11	205.5	10	205.1	4	203.6	8	207,3
92 JOEL AZNAR	ILUSION TEAM	K	212.3	11	212.3	5	210.2	6	209.8	12	209.4	3	210,8
17 CARLA MULOT		Y	211.4	12	205.9	6	205.5	5	202.5	9	202.5	4	205,6
35 JOSE EMILIANO ZAMUDIO	PONS MOTOSPORT ITALIKA RACING	K	211.4	14	211.4	7	206.7	5	206.3	4	205.1	3	208,2
16 DINIS BORGES	SPEED MASTER RACING TEAM	K	211.0	11	208.2	9	206.7	12	206.3	10	204.4	8	207,3
64 SARA SANCHEZ	ILUSION RACING		211.0	11	209.4	12	206.7	8	206.3	5	205.5	10	207,8
19 LORENZO MOHEDANO	TCM TEAM	K	210.6	11	205.1	8	204.8	4	203.6	5	202.5	2	205,3
42 ROSA JIMENEZ	ADN VG RACING	K	210.2	3	205.5	11	205.5	5	204.0	13	204.0	9	205,8
88 TOMAS MARIN	DEZA-BOX77 RACING TEAM	K	209.8	8	206.3	9	206.3	7	205.9	6	201.8	10	206,0
26 DANIEL OCETE	I+DENT JUNIOR RACING TEAM	Y	209.4	9	204.0	10	204.0	4	203.6	5	203.2	3	204,8
95 RICARDO RODRÍGUEZ	PONS MOTOSPORT ITALIKA RACING	K	209.4	12	209.0	4	207.5	14	206.7	9	206.3	7	207,8
5 ADRIAN COVARRUBIAS	PS RACINGTEAM	K	208.6	5	203.2	3	202.9	8	202.9	4	202.5	11	204,0
48 JESUS MARTIM	TEAM MOTO CLUBE DE LOULE	K	208.2	12	207.8	5	207.1	11	205.9	10	204.0	13	206,6
21 RAN YOCHAY	KAWASAKI PALMETO PL RACING	K	207.8	13	205.9	11	205.9	9	205.9	3	205.5	12	206,2
20 LUCAS MOHEDANO	TCM TEAM	K	207.5	7	207.1	8	204.0	6	204.0	9	199.9	3	204,5
23 RUBEN MONTERO		Y	206.7	3	205.5	14	205.1	8	204.8	4	203.6	9	205,1
78 MARTIM LIMA	DEZA-BOX77 RACING TEAM	K	206.3	12	205.9	11	205.9	8	204.4	7	203.2	9	205,1
22 AROA FERNANDEZ	I+DENT JUNIOR RACING TEAM	Y	199.9	11	199.6	14	198.1	9	198.1	5	197.4	4	198,6



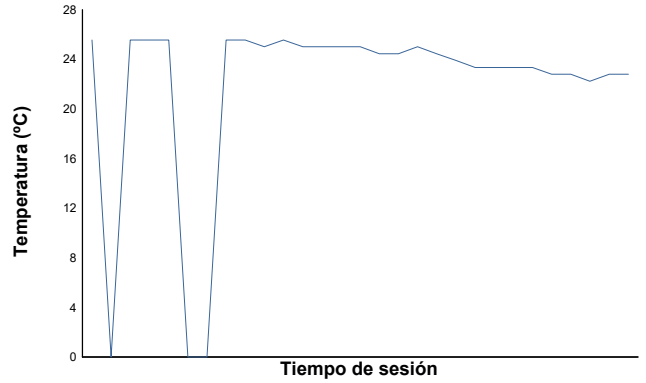
ESBK CIRCUITO DO ESTORIL II 30 AGOSTO Y 1 SEP.
SS300
ENTRENAMIENTOS LIBRE 2

Informe meteorológico

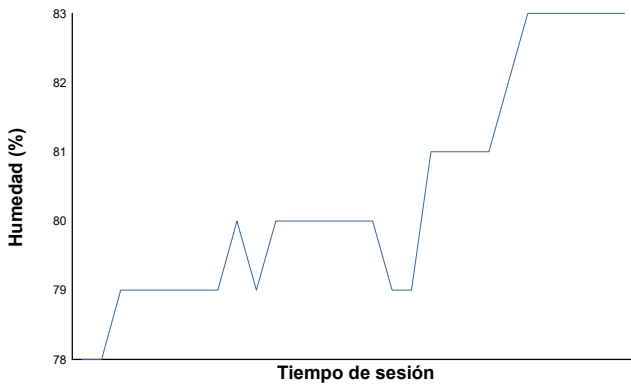
Temperatura del Aire



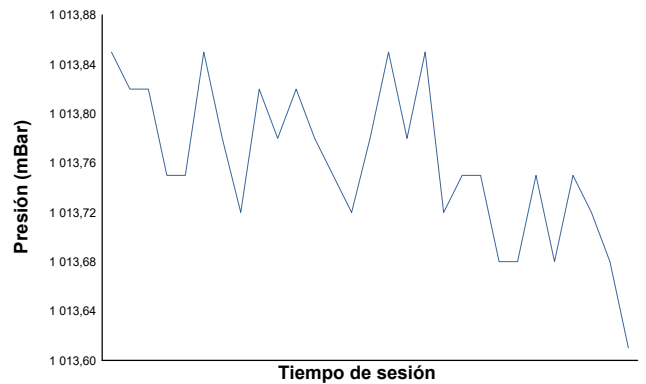
Temperatura de la Pista



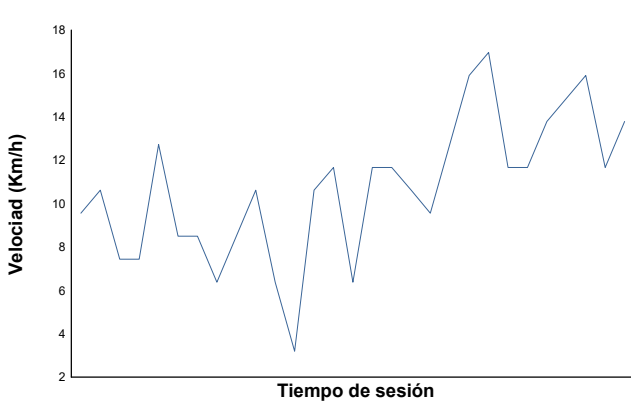
Humedad



Presión

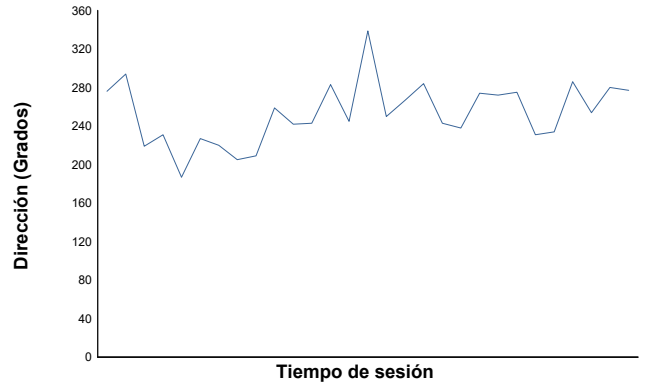


Velocidad del viento



Dirección del viento

Norte=0°/360° Este=90° Sur=180° Oeste=270°



Estado de pista: **SECO**